

NEW Homes

YOUR COMPREHENSIVE WEEKEND GUIDE

MODERN DAY
MID-CENTURY

California dreaming



○ MICHAEL ROBERTS

Sure to draw the eye of mid-century modern design admirers everywhere, The Palm Springs display by Oswald Homes inspires and excites wherever you look.

Renowned for its clean lines, pops of colour and great indoor-outdoor connection, mid-century modern style has continued to reap rewards for Western Australian builders, and Oswald Homes has executed the look with great expertise here.

The display is as impressive as it is clever and an excellent example of minimal and modern architecture.

Oswald Homes Principal Designer Brook Leber said Perth's natural landscape was perfectly suited to the mid-century modern style.

"To many people, Palm Springs is the birthplace of the mid-century movement for which the home is aptly named," he said.

"California enjoys similar weather to Perth, so it's easy to see why the

style works so well here and from where we drew inspiration.

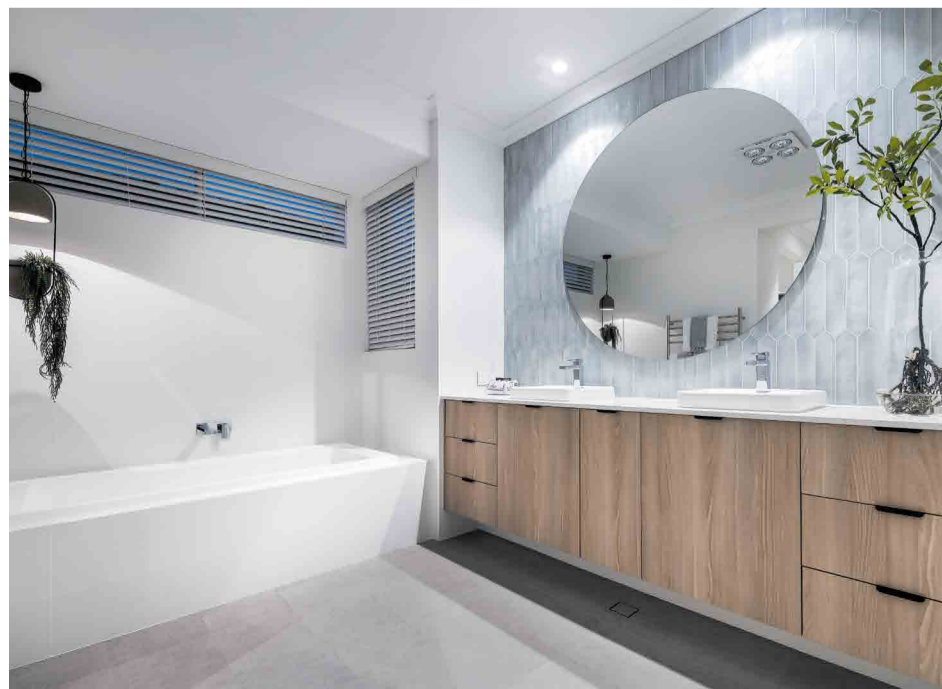
"Emphasising volume, light and open living spaces that draw the outside in via huge windows and glazed doors, it's a perfect fit for our naturally clear and sunny climate."

The Palm Springs makes a lasting impression from the outset, with a dazzling facade that features sweeping horizontal lines, elegant roof shapes, expansive sections of glass and rendered white walls.

Inside, the home boasts a minimalist yet striking white backdrop with a number of sleek and smooth finishes that combine to replicate a sunny Californian vibe.

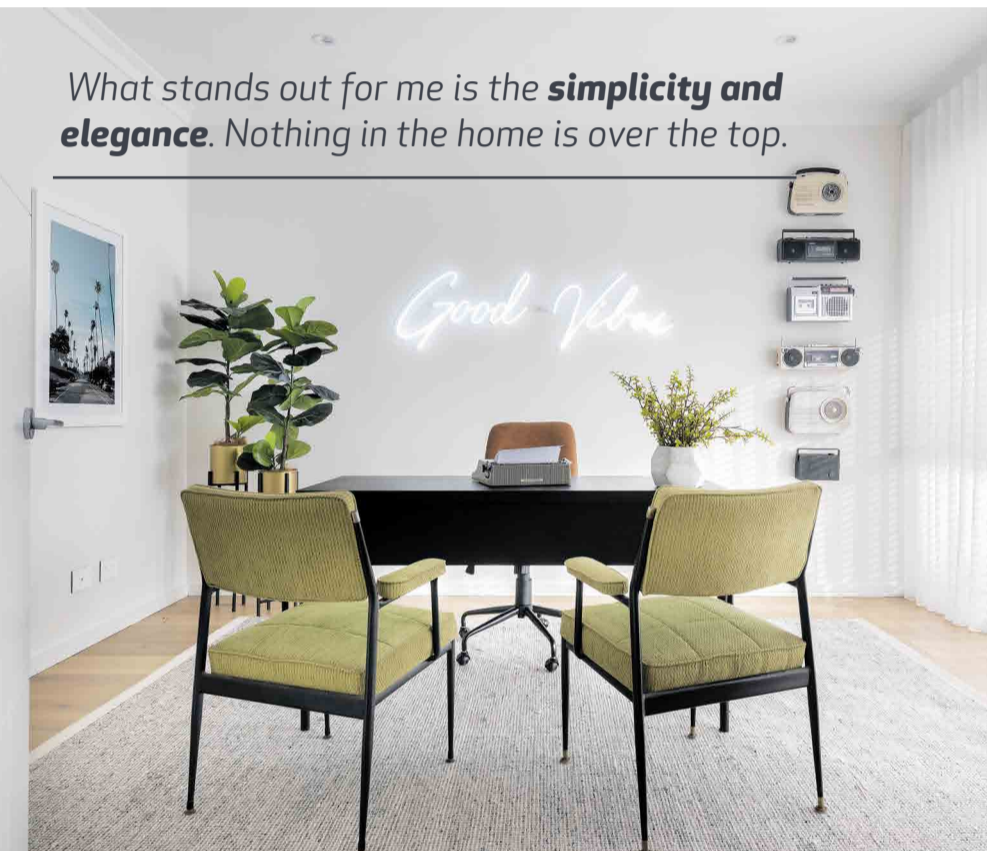
Oswald Homes Interior Designer and Stylist Kestryn Chaloner said geometric tiles in the wet areas, painted facebrick, marble, glass and timber veneer were all used to create a laid-back look and feel.

Continued on page 4...





What stands out for me is the **simplicity and elegance**. Nothing in the home is over the top.



...Continued from page 3

“What stands out for me is the simplicity and elegance,” she said. “Nothing in the home is over the top.”

“We love how the painted face brickwork is natural and textured yet understated.”

A floor plan delivering four bedrooms and three bathrooms allows privacy when needed, as well as plenty of entertaining options for when the family wants to come together.

An opulent master suite with a walk-through dressing room is located at the front, while at the rear a children’s or guest wing features three secondary bedrooms, meaning no-one has to miss out on a bit of luxury.

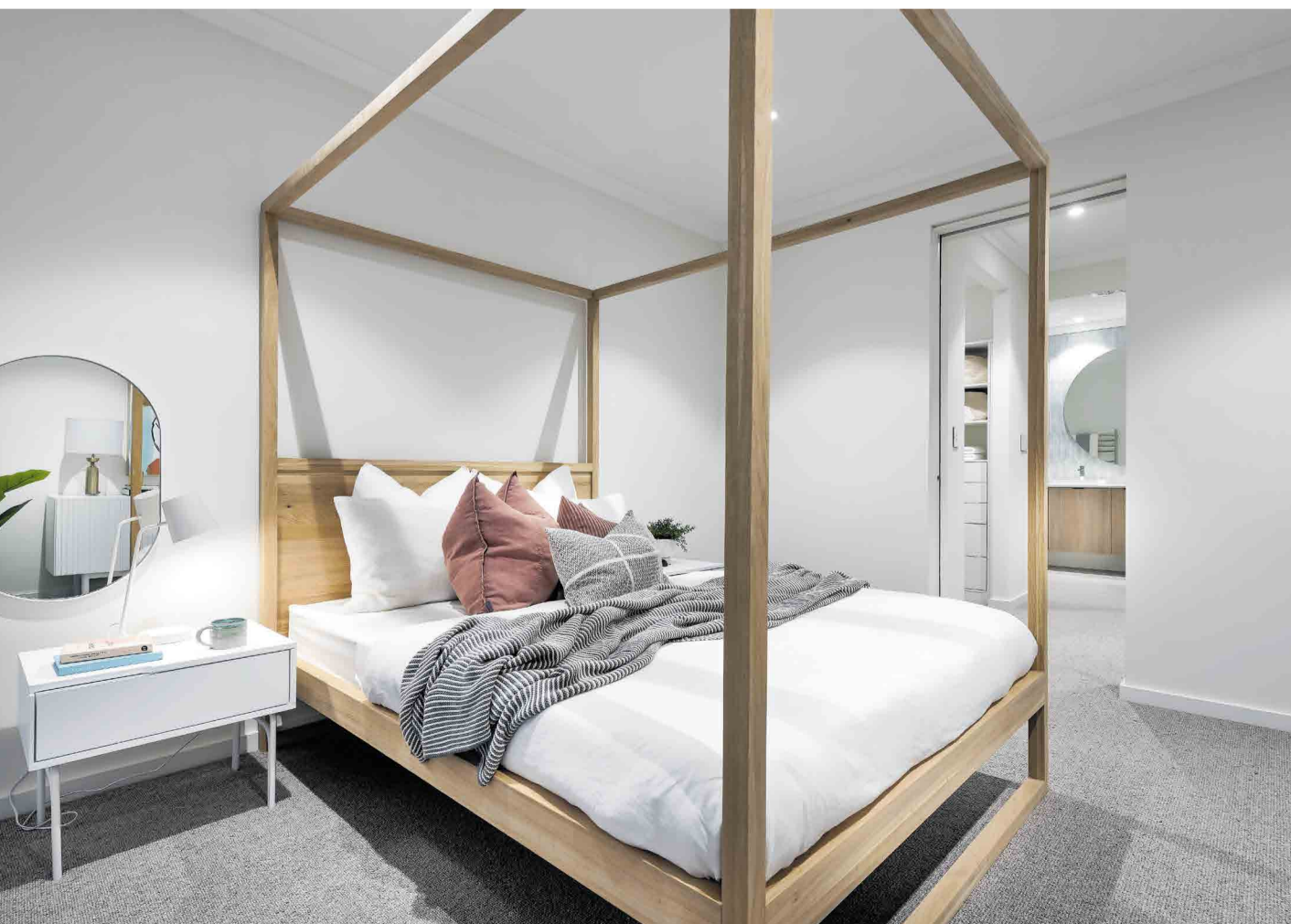
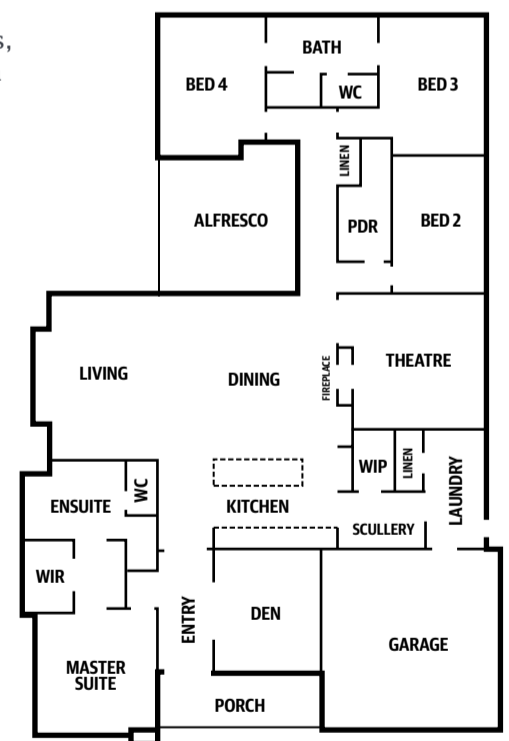
At the heart of the home is a large indoor/outdoor area with a spacious kitchen flowing through

into the scullery, a handy e-nook and the laundry.

This open-plan space allows you to flawlessly transition between making dinner, enjoying it with family at the dinner table and then settling down to relax in front of a movie.

There is plenty to discover and like about this well-executed mid-century modern display.

The Palm Springs is located in Doubleview and is open for viewing Saturdays and Sundays from 1-4pm.



THE PALM SPRINGS

4 3

ADDRESS 34 Shearn Crescent, Doubleview

PRICE From \$452,790

BUILDER Oswald Homes

CONTACT 1300 217 663

www.oswaldhomes.com.au